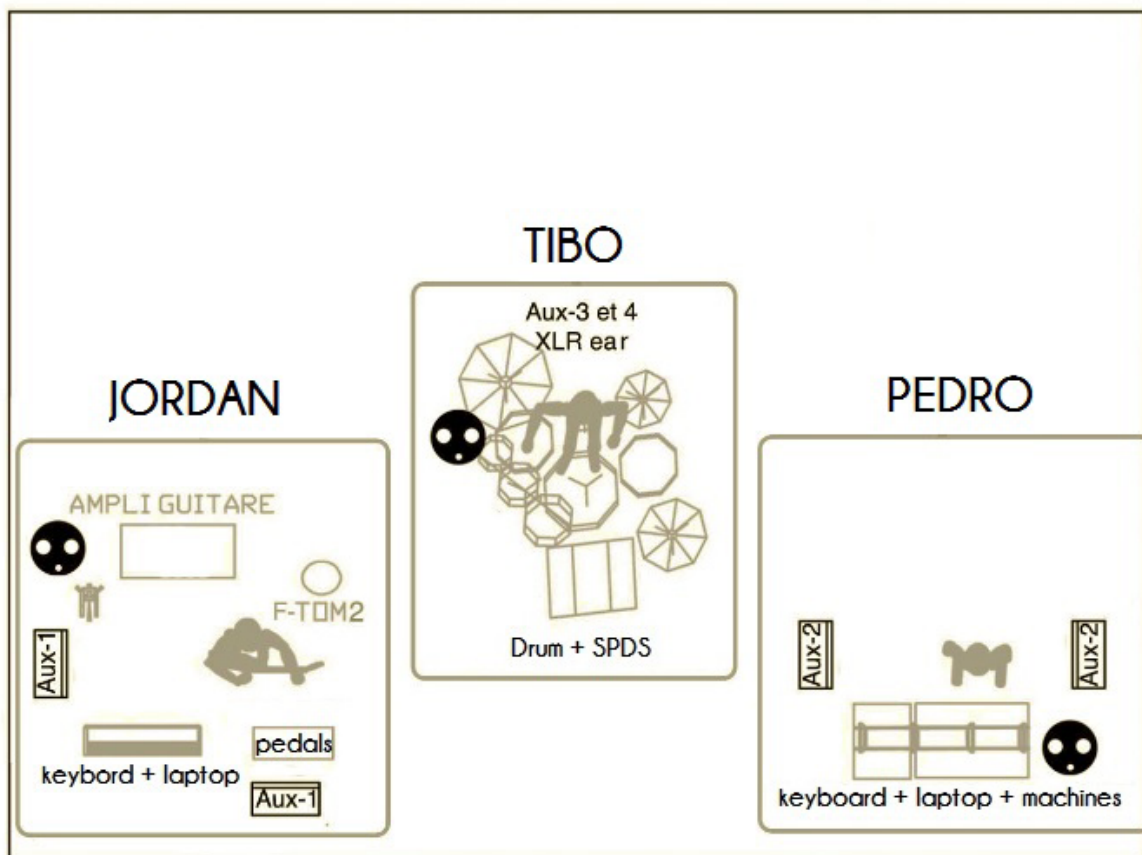


UPDATED 22 July 2016– PLEASE DISREGARD PREVIOUS INFORMATION

NÃO TECHNICAL SPECS

A. STAGE PLOT :



▭ = monitor ● = power (220v)

B. INSTALLATION / SOUNDCHECK :

Thanks to provide 1h30 for artist's installation and soundcheck.

FRONT OF HOUSE :

A quality stereo PA system with sufficient power for the venue should be provided. Such as, L'Acoustics, Meyer Sound, D&B or equivalent. Sub-bass are imperative.

We prefer analogic desk like Midas XL, Yamaha PM 3500, Soundcraft MH. If it's an digital desk thanks to provide a Yamaha PM5D, Yamaha MC7L.

Thanks to provide : (Analogic Desk)

- 1 Drawmer Quad Gate DS 404
- 2 Drawmer DL 241
- 2 BSS DPR 402

UPDATED 22 July 2016 – PLEASE DISREGARD PREVIOUS INFORMATION

C. PATCH LIST:

| Nb | Instrument | Micro | Fourni | Insert | Place |
|----|------------------|---------|--------|-------------|--------|
| 1 | Kick in | SM91 | x | Noise Gate | Tibo |
| 2 | Kick out | Beta 52 | x | Noise Gate | Tibo |
| 3 | Snare up | Beta 98 | x | Compresseur | Tibo |
| 4 | Snare down | SM 57 | x | Noise Gate | Tibo |
| 5 | HiHat | 535 | x | | Tibo |
| 6 | Tom | 604 | x | Noise Gate | Tibo |
| 7 | Floor Tom 1 | 604 | x | Noise Gate | Tibo |
| 8 | Overhead left | 535 | x | | Tibo |
| 9 | Overhead right | 535 | x | | Tibo |
| 10 | Floor Tom 2 | 604 | | Noise Gate | Jordan |
| 11 | SPD SX – L | DI | x | | Tibo |
| 12 | SPD SX – R | DI | x | | Tibo |
| 13 | Guitare left | 509 | x | | Jordan |
| 14 | Guitare Right | Y | x | | Jordan |
| 15 | Guitare | DI | | | Jordan |
| 16 | Drive | DI | | | Pedro |
| 17 | MIX L / Jordan | DI | x | Compresseur | Pedro |
| 18 | MIX R / Jordan | DI | x | Compresseur | Pedro |
| 19 | RTH – L / Pedro | DI | x | Compresseur | Pedro |
| 20 | RTH-R / Pedro | DI | x | Compresseur | Pedro |
| 21 | Bass – L / Pedro | DI | x | Compresseur | Pedro |
| 22 | Bass – R / Pedro | DI | x | Compresseur | Pedro |
| 23 | Mon – L / Pedro | DI | x | | Pedro |
| 24 | Mon – R / Pedro | DI | x | | Pedro |

We need : 3 small mic stands, 4 DI, 1 Senheiser 604 and all cables for microphones (30)

Monitor : 4 same wedges for mix 1 and 2, aux 3-4 ear for drummer

Soundcheck : 1h30 (with installation)

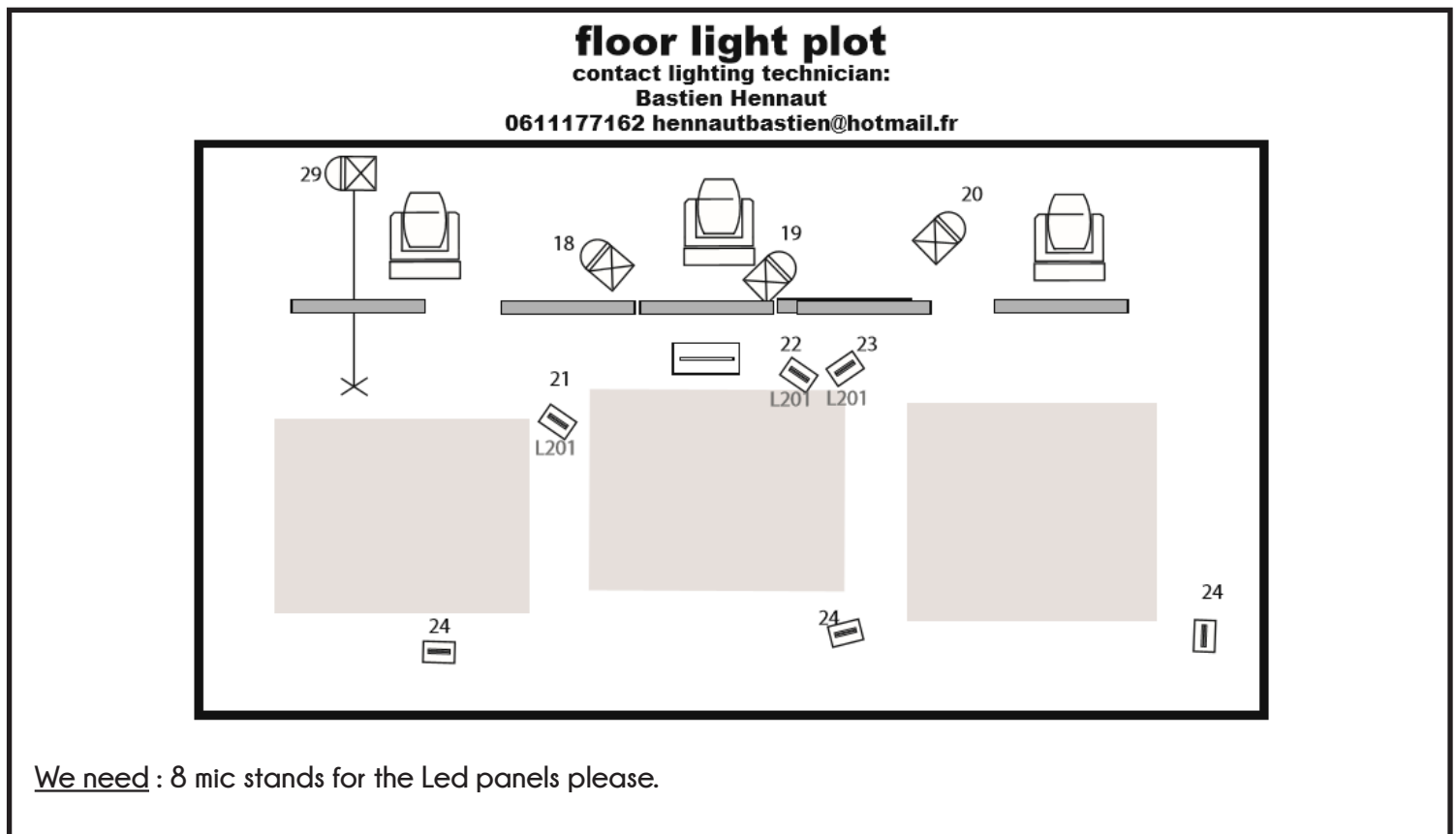
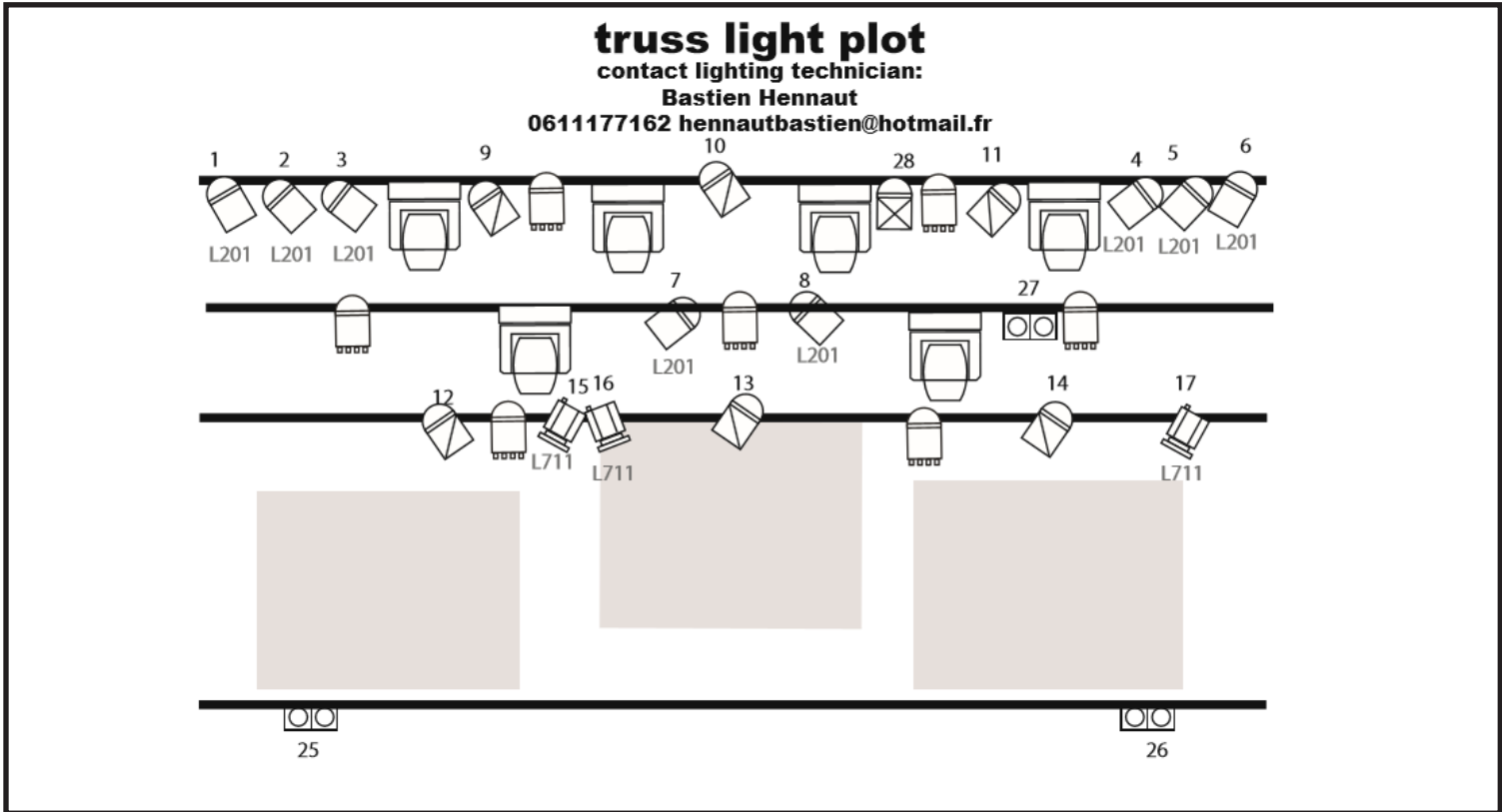
WEDGES :

Thank you to provide 6 wedges (MPD 15, PS 15 ou Max 15) on four groups (2 mono + 1 stereo) and another group for drummer's headphones.

Thank you to inform if monitors are controlled from FOH.

UPDATED 22 July 2015 – PLEASE DISREGARD PREVIOUS INFORMATION

C. LIGHT :



We need : 8 mic stands for the Led panels please.

UPDATED 22 July 2015 – PLEASE DISREGARD PREVIOUS INFORMATION

Light plot key

contact lightning technician:
Bastien Hennaut
0611177162 hennautbastien@hotmail.fr



4x PAR 64 1000W CP62



6x PAR 64 1000W CP61



8x PAR 64 1000W CP60



3x PC 1000W



3x flood lights 500 W on floor stand (provided)



3x flood lights 150 W on floor stands (provided)



6x Led panels (provided)



3X FL13000



Strobe (Atomic 3000)



Par Led



1X PAR 64 CP 62 on mic stand (provided)



moving light (spot like Mac 700, ...)

1 >> 29 : channel number

L201: gel reference lee filter

Providing:

- conventional light desk (Ma light co)

- moving head control desk (Gran Ma)

- a DMX XLR 3 pins line between FOH and upstage for our led panels

- Fog machine

All changes of this light plot are possible. Please contact me for any changes

TECH CONTACTS

Please note we can be flexible, but we must discuss, in advance, any specific difficulties you have with this spec.

Sound technician :

Thierry - 0033 (0)6 81 08 11 96 - thierry.uma@gmail.com

Light technician :

Bastien - 0033 (0)6 11 17 71 62 - hennautbastien@hotmail.fr